

# About LM Lift Material GmbH, Germany

## Who we are

- Sematic Group is a leading supplier in the world of elevator components. Our activities include the production and distribution of standard and special automatic **elevator doors**, rope and hydraulic **complete elevators**, subsystems and components as well as **cabins**, **car packages** and **entrances**.
- With headquarters in Osio Sotto (Italy), manufacturing facilities and commercial offices in Italy, UK, Germany, Hungary, Turkey, Mexico, USA, China, Hong Kong, Singapore and India, plus the collaboration of Group companies, - Tyler (USA), Computec (Italy) and LM Liftmaterial (Germany) - we are able to offer customers, architects and designers a wide range of products even for the most challenging projects: from standard and one-of-a-kind solutions for **high-rise**, **residential** and **civil** buildings to **marine**, **commercial** and **heavy-duty** applications as well as specific solutions for **modernization**.

# History

**1959** - Mr. Francesco Zappa starts up the elevator company ZAPPA in Cinisello Balsamo (MI).

**1973** - The company moves to Osio Sotto (BG, I) and changes its name into **SEMATIC ITALIA spa**. The main business is **automatic doors** for lifts.

**1989** - SEMATIC sets up the company **SEMATIC UK Ltd** in England to assemble standard lift door systems and to provide technical support for UK customers.

**1999** - SEMATIC acquires interest in **COMPUTEC srl**, a company specialized in the development of industrial electronics, computer assembly and EMC testing.

**2000** - SEMATIC set up **SEMATIC HUNGARIA kft** and **SEMATIC SINGAPORE Pte Ltd** sales offices to offer Sematic elevator door systems to Eastern Europe and Asia.

**2000** - **VERRI srl**, located in Northern Italy, is acquired. Verri is specialized in the manufacture of high quality standard and custom elevator cabs. Lately, with the acquisition of highly specialised personnel, Verri started the design and manufacture of standard and custom steelwork and shaft arrangements.

**2000** - **LM LIFTMATERIAL GmbH** is acquired. LM Liftmaterial offers complete elevators. It has subsidiaries in Hong Kong and – more recently – in Australia.

**2000** - **TYLER ELEVATOR PRODUCTS** is acquired. Tyler is specialized in custom elevator cabs and entrances for the North American markets.

**November 9, 2000** – **The Sematic Group is created.**

**2003** – VERRI moves into the new facilities in Suisio (BG)

**2006** – Starting of the operations in **Mexico**

**2007** – Starting of the operations in **Sematic Suzhou China**

**2008** – Starting of the operations in the new plant of Sematic Hungaria in Nyiregyhaza

**2009** – Opening of Sales representative office in **Turkey**; Announcement of J/V Operations in **India**

**2009** – Starting of the operations in **Sematic RE Elevator Products India.**

## Mission

- The SEMATIC GROUP has been founded with the aim of taking care of the Global Market Requirements in the Lift Business.
- The presence of widely skilled manufacturing companies in different countries together with highly skilled engineering personnel will be a guarantee for Sematic's growing customer base to benefit from receiving very high quality products.



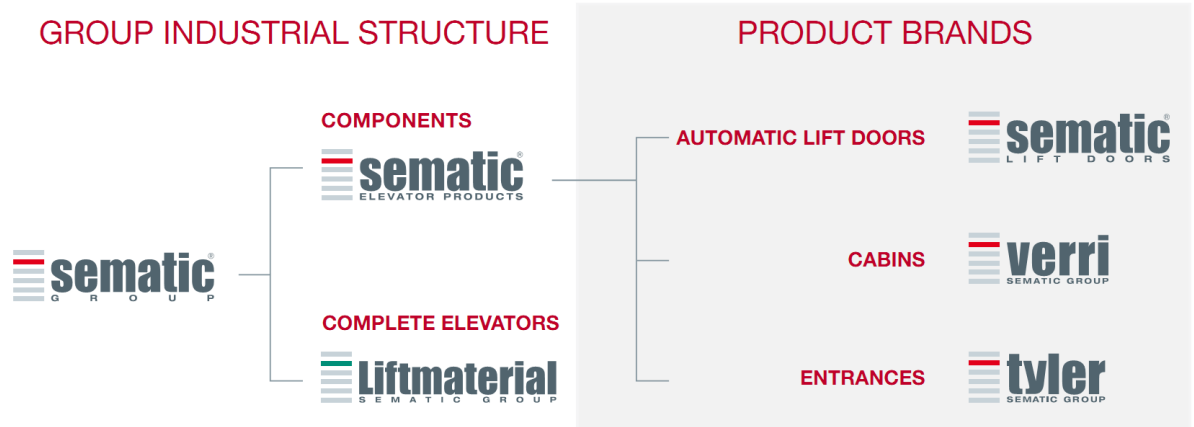
# Sematic Group Worldwide



<p><b>AMERICA</b></p> <p><b>USA</b></p> <ul style="list-style-type: none"> <li>▪ Tyler Elevator Products a division of Sematic USA Inc.</li> </ul> <p><b>Mexico</b></p> <ul style="list-style-type: none"> <li>▪ Sematic Elevadores Mexico. S. de R.L. de C.V:</li> </ul>	<p><b>EUROPE</b></p> <p><b>Italy</b></p> <ul style="list-style-type: none"> <li>▪ Sematic SpA</li> <li>▪ Computec srl</li> </ul> <p><b>Great Britain</b></p> <ul style="list-style-type: none"> <li>▪ Sematic UK Ltd</li> </ul> <p><b>Germany</b></p> <ul style="list-style-type: none"> <li>▪ LM Liftmaterial GmbH</li> </ul> <p><b>Hungary</b></p> <ul style="list-style-type: none"> <li>▪ Sematic Hungaria Kft</li> </ul> <p><b>Turkey</b></p> <ul style="list-style-type: none"> <li>▪ Sematic Asansor San. Ve. Tic. Ltd. Sti</li> </ul>	<p><b>ASIA</b></p> <p><b>China</b></p> <ul style="list-style-type: none"> <li>▪ Sematic Elevator Products (Suzhou) Co Ltd</li> <li>▪ Sematic Elevator Products (Changshu) Co Ltd</li> <li>▪ Sematic Hong Kong Ltd</li> </ul> <p><b>Singapore</b></p> <ul style="list-style-type: none"> <li>▪ Sematic Singapore Pte Ltd</li> </ul> <p><b>India</b></p> <ul style="list-style-type: none"> <li>▪ Sematic RE Elevator Products Pvt Ltd</li> </ul>
---	---	---

- Sematic Group operates on a worldwide scale, with sales and distribution network covering **"traditional" markets** as well as quickly **developing areas** such as China, India and Eastern Europe.
- Thanks to our global organization, we are close to our customers **everywhere in the world** and able to respond timely and efficiently to all their needs.
- Sematic Group has several different manufacturing units all over the world with a strategic presence in **low-cost labor** country (ex. China, Hungary, Mexico and India)

# Group Industrial Structure / Product Brands



# Manufacturing Units



Sematic S.p.A. – **Group Headquarters**  
Osio Sotto (Italy)

Sematic S.p.A.  
Suisio (Italy)

Sematic UK Ltd  
Wombwell (Great Britain)

Sematic Hungaria Kft  
Nyiregyhaza (Hungary)

Sematic Elevator Products  
(Suzhou) Co. Ltd  
Suzhou (China)

Tyler Elevator Products –  
Sematic USA Inc.  
Twinsburg (USA)

LM Liftmaterial GmbH  
Pliening (Germany)

Sematic RE Elevator Products  
India Pvt Ltd  
Mumbai (India)



# LM Liftmaterial GmbH



## Business:

- Complete Elevators

## Main products:

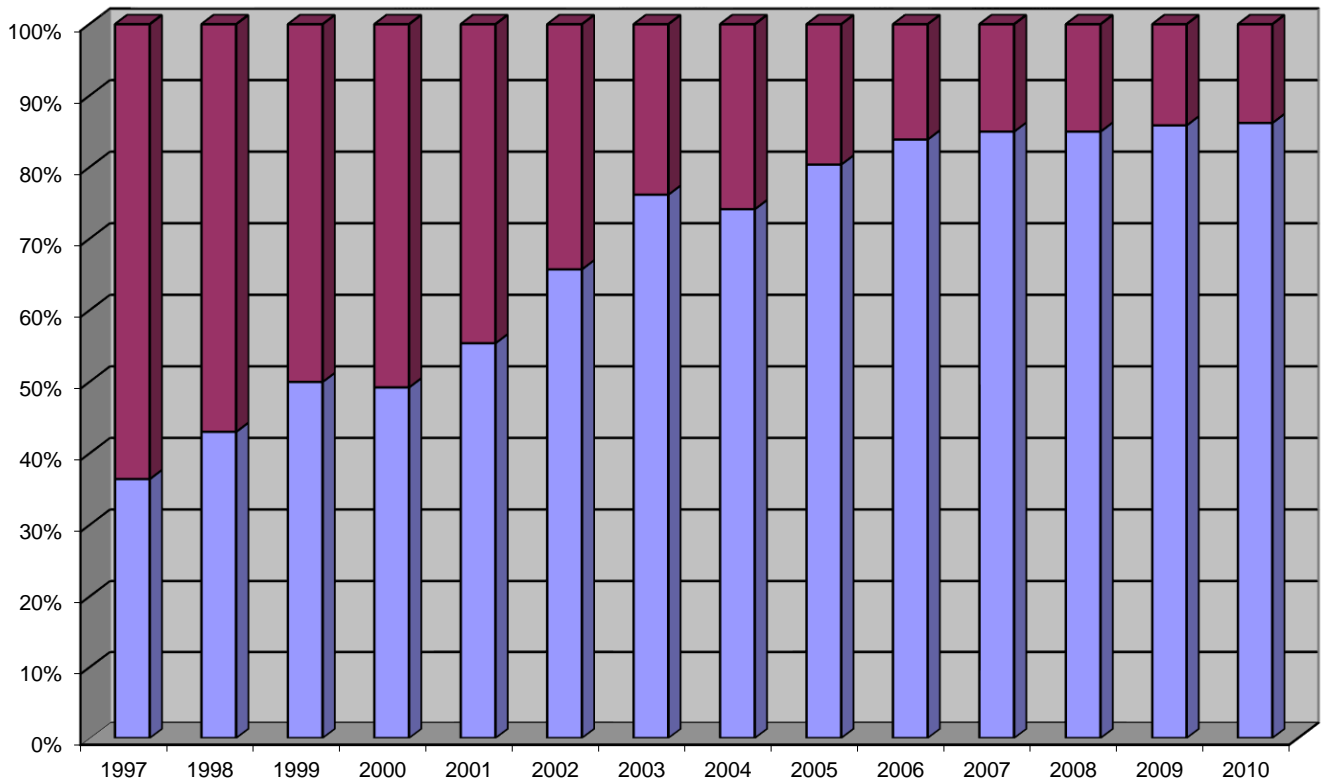
- Rope traction lifts for drive locations on top, down at the side, and on top at the side of the shaft
- Rope traction lifts with integrated machine room (MRL - Machine Room Less Lifts)
- Modular hydraulic lifts with cantilevered car sling
- Hydraulic lifts with cylinder under or beside cabin, twin piston or pulling piston drive system
- Panoramic lifts
- Hospital lifts
- Special executions
- Drive system for rope traction and hydraulic lifts

## Operations area:

- Worldwide
- Core areas: Europe, South-East Asia



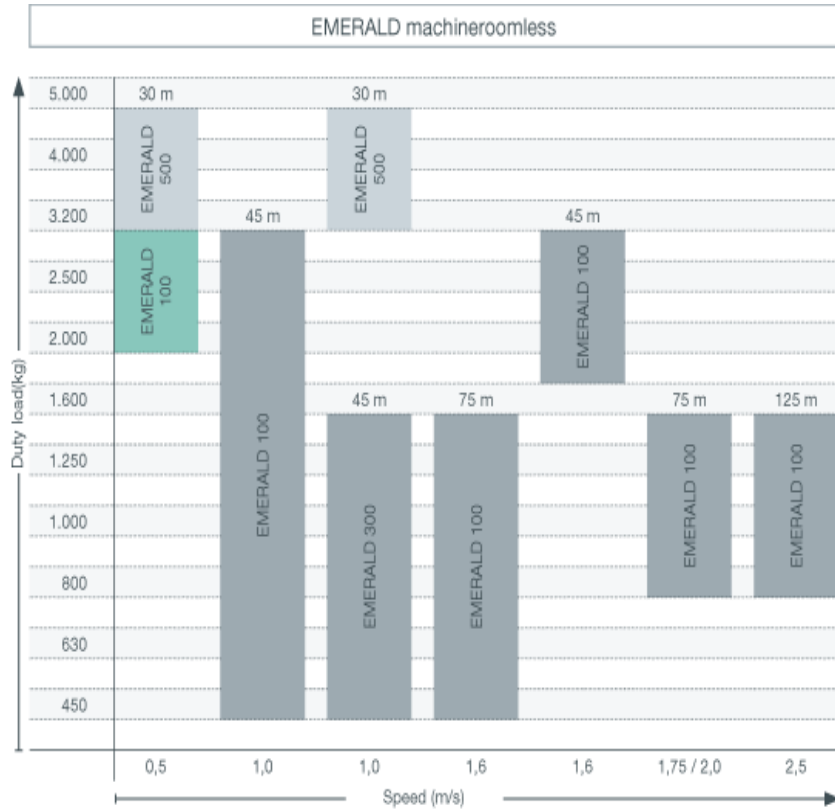
# The core business of LM LIFTMATERIAL



**Red = Components**

**Blue = Systems**

# The lines of product: EMERALD



## Features EMERALD 100 and 500:

- Standard pit
- Standard headroom
- Cabin dimensions variable
- Cabin decoration variable
- Gearless drive
- Geared drive for EMERALD 100 at speed of 0,5 m/s
- EMERALD 500 with duty load 4000 kg and cabin surface 16 m<sup>2</sup> only for vehicle lift

## Features EMERALD 300:

- Reduced pit  $\geq 250$  mm for 1,0 m/s
- Headroom standard
- Cabin dimensions variable
- Cabin decoration variable
- Gearless drive in the headroom
- Option: drive in the pit



## Company philosophy

- **The client** is our focus, his success is also ours.
- We want to gain and secure **the trust** of our clients by long term partnership relation.
- **Our products** and services fulfill the high standards of our clients.
- **Competence** and the positive attitude of our staff are the basis of our success.
- **Quality and innovation** are the result of our long term partnership relation to our suppliers.
- **We are open** for new ideas and new products to secure our growth, to protect the environment and to shape our future.



## Goals of LM LIFTMATERIAL

- Constant improvement process in the field of engineering
- Better technology at a competitive price
- Partner in Service for our customers by locally available competence
- Partner in Logistics by interfaced process

## Project of reference



### Project:

#### Cable Car, Dresden, Germany

Duty load 800 kg

Travel 17,50 m

Speed 0,82 m/s

Stops 2, through car

### Specialities:

#### Lift:

- Drum drive 8 meters away from shaft pit

#### Cabin:

- Heating and air conditioning
- Outside stainless steel cladding, with grey protective paint, corrosion proof

#### Landing doors:

- Portals integrated into the structure
- Sills made of stainless steel, heated
- Door header made to a high degree of stainless steel
- Uppermost landing door wind proof fitted with wind sensor to cut off the lift





**Project:**

**Porsche Zentrum, Leipzig, Germany**

Duty load	9.500 kg
Travel	21,91 m
Speed	1,0 m/s
Stops	6

**Specialities:**

- Lateral walls lined with brushed 240 grain stainless steel
- Stone flooring to match the building floor
- Special design of the two pieces bottom frame allowing easier access into the shaft for installation
- Innovative design of the suspended ceiling with partitions of satinated glass
- Handrail on one full lateral cabin wall, horizontal cabin operation panel on both lateral walls in accordance with the ruling codes for handicapped persons



**Project:**  
**SAS-Radisson Hotel, Berlin**  
**Unter den Linden**

**8 Lifts**  
Duty load 1.350 kg

Travel 29, 35 und 36 m  
Speed 1,6 und 2,0 m/s  
Stops 9/10 und 12

**2 Lifts MRL**  
Duty load 1.250 kg

Travel 32 m  
Speed 2,0 m/s  
Stops 4/5

**1 Lift**  
Duty load 1.600 kg

Travel 29 m  
Speed 1,6 m/s  
Stops 9

**4 Lifts, hydraulic**  
Duty load 630 und  
1.050 kg

Travel 3 und 11 m  
Speed 0,6 m/s  
Stops 2 und 4



**Project:**  
**Airport Munich, Star Alliance Terminal**  
**Totally 28 lifts of which**  
**4 Lifts at check-in**  
Duty load 3.400 kg  
Travel 6,6 m  
Speed 1,0 m/s  
Stops 2  
**5 Lifts in the administration**  
Duty load 1.250 kg  
Travel 16 and 22 m  
Speed 1,0 m/s  
Stops 4, 5 and 6  
**6 Goods/Trolley lifts**  
Duty load 3.150 resp. 3.300 kg  
Travel 5, 12 and 16 m  
Speed 1,0 m/s  
Stops 2 and 3 all through car  
**2 Goods lifts oversize luggage**  
Duty load 4.500 kg  
Travel 7 m  
Speed 0,63 m/s  
Stops 2 through car





**Project:**  
**Dubai Festival City Zone 4,**  
**totally 17 Panoramic Lifts**

**Left picture:**  
**2 glass lifts hydraulic two pistons**  
**direct acting, simplex**

Duty load

Speed

Stops

**Specialities:**

- Cabin front part without ceiling
- Natural stone flooring
- Four panel centre opening doors  
glass framed

**Right picture:**  
**2 duplex groups of glass lifts**

Duty load

Speed

Stops

**Specialities:**

- Glass doors framed including cladding  
on shaft side
- Natural stone flooring
- Cabin made of stainless steel



**Project:**

**Dubai Festival City Zone 8,  
totally 85 Lifts**

**2 Panoramic Lifts:**

Duty load: 1.600 kg

Speed: 1,60 m/s

Travel: 19,00 m

Stops: 05

**Specialties:**

- Consisting of one triplex and one duplex group of lifts travelling in a painted shaft steel structure by LM
- Machine room on the pit level located at the front side of shaft
- Cabins fitted with full glass roof, rear part with integrated illumination simulating a "sky of stars"
- Wall made of glass, mounted to each other by spacers
- Natural stone flooring
- Cabins outside cladding of polished stainless steel
- Landing and cabin doors made of full glass panels
- Digital dot matrix indicators, blue colour



**Project:**

**Erewan Shopping Plaza, Moscow  
totally 9 Lifts**

**2 Panoramic Lifts: Panoramic lift of basic execution similar to EMERALD 300/MALACHIT, however  
drive and counterweight opposite to each other.**

Duty load	1.000 kg
Speed	1,00 m/s
Travel	10,00 m
Stops	3

**Specialities:**

- Lifts in shaft structure made of stainless steel (electrolytic polish) supplied by LM
- Safety gear on counterweight
- Cabin walls inside and outside lined with stainless steel mirror polish
- Cabin flooring natural stone
- Pit 280 mm



**Project:**

**Mercedes showroom, Jakarta, Indonesia**

**1 passenger lift for the administration:**

Duty load 600 kg

Speed 1,00 m/s

Stops 6

**1 passenger lift to the parking decks:**

Duty load 630 kg

Speed 1,00 m/s

Stops 3

**1 car lift to the service area:**

Duty load 3.650 kg

Speed 0,50 m/s

Stops 6



**Project:**

**Nina Tower, Chai Wan, Hong Kong**

**1 car lift, rope traction, 6:1, with machine room:**

Duty load 13.000 kg (static 19.000 kg)

Speed 0,50 m/s

Travel 38,00 m

Stops 5

**1 cargo lift, rope traction, 4:1, with machine room:**

Duty load 8.000 kg

Speed 0,50 m/s

Travel 115,00 m

Stops 26

**Project** : **Bank of China**  
**Location** : **Weifang, Shandong,  
People's Republic of China**

Number of Lifts : 1  
Nominal Load : 1600 kg  
Number of Doors : 16  
Travel Height : 95,8 m  
Speed : 2,50 m/s  
Control System : Duplex

Number of Lifts : 3  
Nominal Load : 1300 kg  
Number of Doors : 30  
Travel Height : 95,8 m  
Speed : 2,50 m/s  
Control System : Duplex

Number of Lifts : 1  
Nominal Load : 1300 kg  
Number of Doors : 32  
Travel Height : 105,4 m  
Speed : 2,50 m/s  
Control System : Simplex

Number of Lifts : 1  
Nominal Load : 1300 kg  
Number of Doors : 5  
Travel Height : 18,9 m  
Speed : 1,75 m/s  
Control System : Simplex



**Project : Graha Iskandarsyah**  
**Location : Jakarta, Indonesia**

Number of Lifts : 3  
Nominal Load : 1000 kg  
Number of Doors : 14  
Travel Height : 50,9 m  
Speed : 1,50 m/s  
Control System : Triplex

Number of Lifts : 1  
Nominal Load : 1300 kg  
Number of Doors : 14/28  
Travel Height : 50,9 m  
Speed : 1,50 m/s  
Control System : Simplex

Number of Lifts : 1  
Nominal Load : 1000 kg  
Number of Doors : 14/28  
Travel Height : 50,9 m  
Speed : 1,50 m/s  
Control System : Simplex



**Project** : **World Trade Centre**  
**Location** : **ChengDu, Sichuan,**  
**People's Republic of China**

Number of Lifts : 3  
Nominal Load : 1600 kg  
Number of Doors : 27  
Travel Height : 91,5 m  
Speed : 2,00 m/s  
Control System : Triplex

Number of Lifts : 1  
Nominal Load : 1300 kg  
Number of Doors : 29  
Travel Height : 99,8 m  
Speed : 2,00 m/s  
Control System : Simplex

Number of Lifts : 2  
Nominal Load : 1300 kg  
Number of Doors : 29  
Travel Height : 99,7 m  
Speed : 2,00 m/s  
Control System : Duplex





**Project** : **Material Building**  
**Location** : **ChengDu, Sichuan,  
People's Republic of China**

Number of Lifts : 2  
Nominal Load : 1000 kg  
Number of Doors : 23  
Travel Height : 84,0 m  
Speed : 1,75 m/s  
Control System : Duplex

Number of Lifts : 1  
Nominal Load : 2000 kg  
Number of Doors : 24  
Travel Height : 84,0 m  
Speed : 1,00 m/s  
Control System : Simplex



**Project** : **JinChen Building**  
**Location** : **Urumchi, Xinjiang,**  
**People's Republic of China**

Number of Lifts : 2  
Nominal Load : 1000 kg  
Number of Doors : 16  
Travel Height : 50,1 m  
Speed : 1,75 m/s  
Control System : Duplex



**Project** : **Donghai International Building**  
**Location** : **Qingdao, Shandong,**  
**People's Republic of China**

Number of Lifts : 2  
Nominal Load : 1600 kg  
Number of Doors : 31  
Travel Height : 96,0 m  
Speed : 2,50 m/s  
Control System : Duplex

Number of Lifts : 2  
Nominal Load : 1000 kg  
Number of Doors : 34  
Travel Height : 111,0 m  
Speed : 2,50 m/s  
Control System : 2 x Simplex

Number of Lifts : 2  
Nominal Load : 1300 kg  
Number of Doors : 7  
Travel Height : 28,5 m  
Speed : 1,75 m/s  
Control System : Duplex



**Project : Unipark Office Building**  
**Location : Penang, Malaysia**

Number of Lifts : 4  
Nominal Load : 1150 kg  
Number of Doors : 23  
Travel Height : 81,1 m  
Speed : 2,50 m/s  
Control System : Quadruplex

Number of Lifts : 3  
Nominal Load : 1150 kg  
Number of Doors : 30  
Travel Height : 87,6 m  
Speed : 2,50 m/s  
Control System : Triplex

Number of Lifts : 2  
Nominal Load : 1150 kg  
Number of Doors : 11  
Travel Height : 108,0 m  
Speed : 2,50 m/s  
Control System : Duplex

Number of Lifts : 1  
Nominal Load : 1000 kg  
Number of Doors : 30  
Travel Height : 108,0 m  
Speed : 2,50 m/s  
Control System : Simplex

Number of Lifts : 1  
Nominal Load : 1000 kg  
Number of Doors : 4  
Travel Height : 16,2 m  
Speed : 1,50 m/s  
Control System : Simplex



**Project** : Renaissance Centre  
**Location** : Auckland, New Zealand



Number of Lifts : 2  
Nominal Load : 1000 kg  
Number of Doors : 17  
Travel Height : 47,65 m  
Speed : 2,00 m/s  
Control System : Duplex

**Project** : Sonata Apartments  
**Location** : Sydney, Australia



Number of Lifts : 2  
Nominal Load : 1050 kg  
Number of Doors : 19  
Travel Height : 54,00 m  
Speed : 2,00 m/s  
Control System : Duplex

**Project : Ministry of Transport**  
**Location : Jakarta, Indonesia**

Number of Lifts : 4  
Nominal Load : 1350 kg  
Number of Doors : 10  
Travel Height : 91,3 m  
Speed : 3,00 m/s  
Control System : Quadruplex

Number of Lifts : 4  
Nominal Load : 1350 kg  
Number of Doors : 12  
Travel Height : 58,5 m  
Speed : 2,50 m/s  
Control System : Quadruplex

Number of Lifts : 1  
Nominal Load : 1350 kg  
Number of Doors : 26  
Travel Height : 96,65 m  
Speed : 1,75 m/s  
Control System : Simplex

Number of Lifts : 2  
Nominal Load : 1000 kg  
Number of Doors : 7  
Travel Height : 18,5 m  
Speed : 1,00 m/s  
Control System : Duplex

