

# ABOUT OUR PRINCIPAL

**Name of Principal: M S ELEVATORS SDN. BHD**



Company Name : M S ELEVATORS SDN. BHD.

Company No : 104187-U



Registered Address/Head Office : 8th Floor, Wisma Penang Garden  
42 Jalan Sultan Ahmad Shah  
10050 Penang

Tel & Fax Numbers : Tel: +604-2294300  
Fax: +604-2274533

Manufacturing Company in Prai : 2530, Lorong Perusahaan 10  
Prai Industrial Estate  
13600 Prai Penang

Tel & Fax Numbers : Tel: +604-3900875  
Fax: +604-3905755

Status of Company : Private Limited

Date of Establishment : 18 July 1983

Primary Business : Manufacturing, assembling and sales of elevators & escalators.

Types of Registration : Manufacturing license issued by Ministry of International Trade  
and Industry, Malaysia since 23 June 1983  
License No. A 004379

For the manufacturing of elevators, escalators and parts thereof

Obtained ISO 9001:2000

## Principal's Partner

**MS ELEVATOR GROUP : Joint Venture between  
MS Group and Toshiba Elevator Corporation Japan  
MS GROUP 51% : Toshiba Elevator 49%**

M S ELEVATORS SDN BHD

### **Corporate office**

8<sup>th</sup> Floor, West Wing, Wisma Penang Garden  
42, Jalan Sultan Ahamd Shah, 10050 Penang, Malaysia  
**Established**  
May 15, 1982



### **Our partner**

TOSHIBA ELEVATOR AND BUILDING SYSTEMS  
CORPORATION (TELCO)

### **Head office**

6-5-27, Kitashinagawa, Shinagawa Ward,  
Tokyo, Japan  
**Established**  
February 18, 1967



# Factory Location

## Plant location

2530, Lorong Perusahaan 10, Prai Industrial Estate, 13600 Prai, Penang, Malaysia.

## Area

500,000 sq feet (built-up).



# FACTORY SIZE & MANUFACTURING CAPACITY

## FACTORY SIZE & MANUFACTURING CAPACITY

*\* Land Area : 50,000 sq m - built-up manufacturing & warehousing complex – in PRAI  
30,000 sq m – build -up manufacturing complex – Kulim*

*\* Capacity : 2000 standard elevators and 1000 escalators on a single shift*

*\* Employees : More than 1000 headcount*

### **Factory - 400**

- Sales, Installation & Maintenance : 600*
- Subcontractors & Vendors : over 3000*
- 

## **CORPORATE INFORMATION**

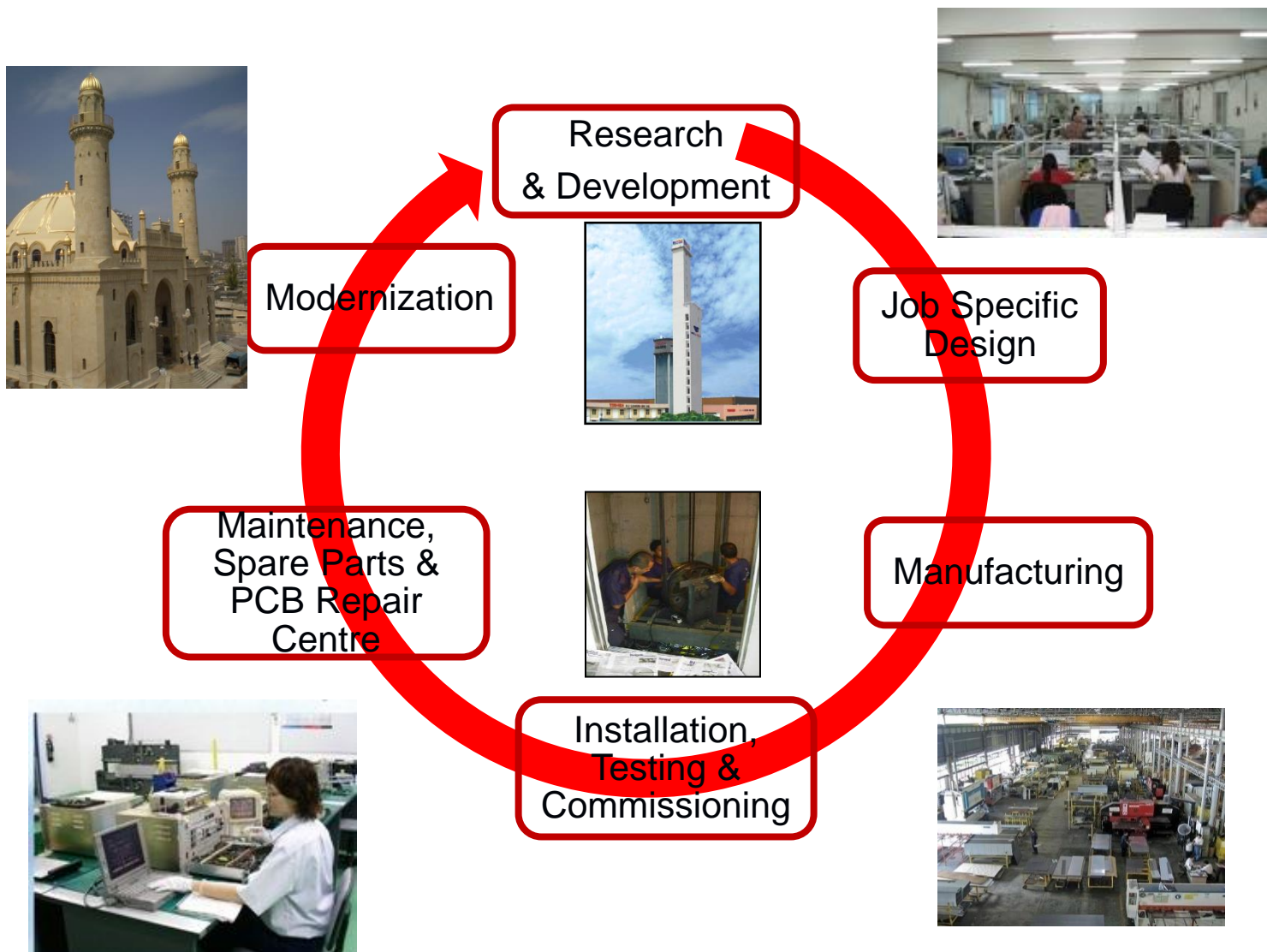
*\* Supply Record : Over 20000 elevators/escalators across 20 countries*

*\* Under Maintenance : Direct : 15,000 units      Indirect : 3000 units*

- Turnover (Sales ) : US \$ 250 Million*
- Property Assets : US \$ 200 Million*
- Inventory Assets : US \$ 25 million*

*Banking Facilities : US\$100 million*

# Total Value Chain Manufacturer



## Quality System/ Certifications

- **Quality Management System**
  - EN ISO 9001:2000
  - BS EN ISO 9001:2000
  - MS ISO 9001:2000
  
- **Product Certification**
  - EN115:1995 + A1 : 1998 + A2 : 2004
  - EN 81-1:1998 + AC:1999
  - BS 476 Part 22: 1987 for fire resistance door
  - MS 1073 Part 3: 1996 for fire resistance door



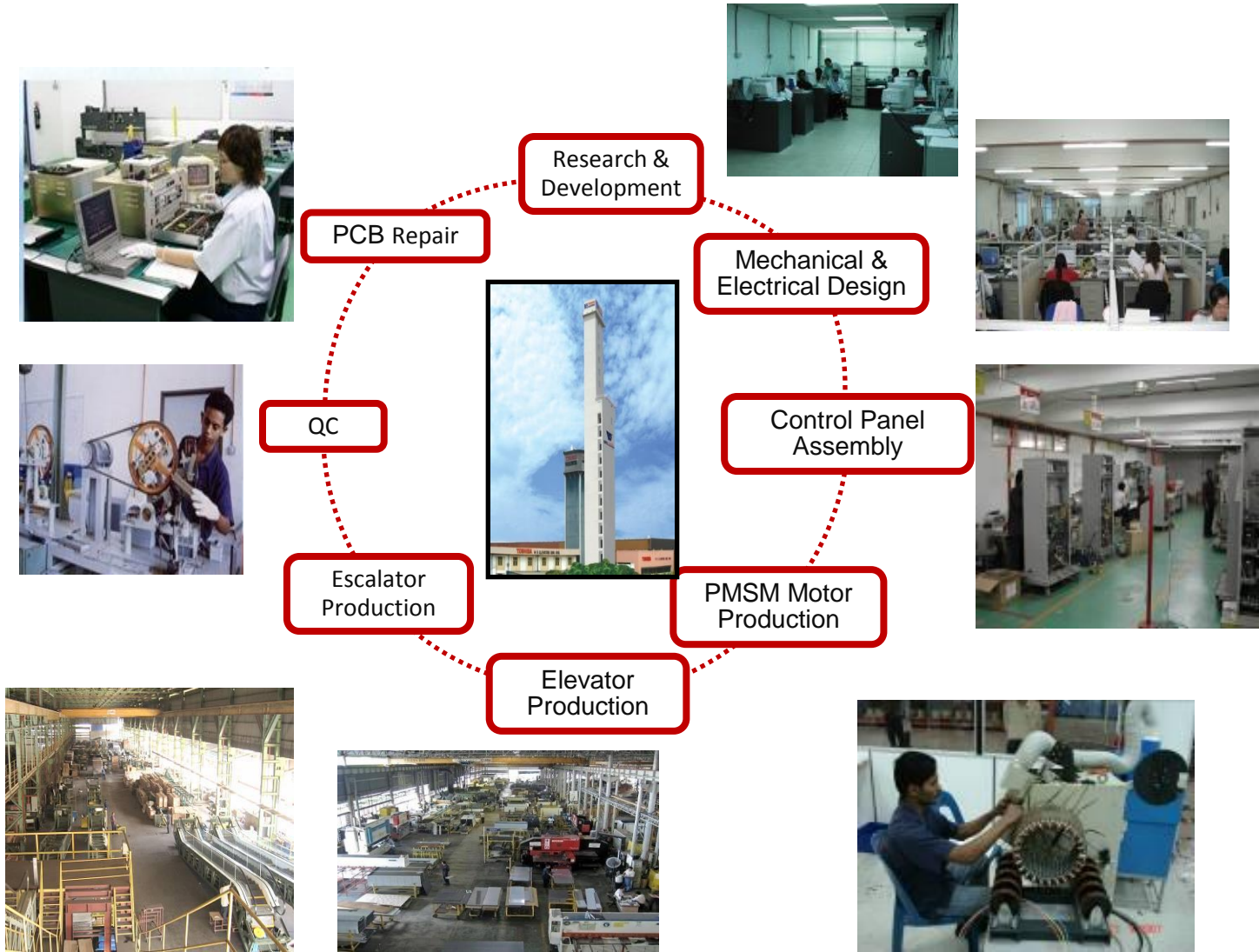
Certification No. : 403502  
ISO 9001:2000



Industrie Service



# Gallery- Manufacturing at Glance





## Industry Excellence Award



### So, what is it in for you?

- ✓ Add value to your building.
- ✓ Increase tenantable value.
- ✓ Lower maintenance cost.
- ✓ Peace of mind.

# INTERNATIONAL AND GLOBAL BUSINESS UNIT

## **A. Middle East, CIS & Africa:**

- 1) Algeria
- 2) Azerbaijan
- 3) Bahrain
- 4) Dubai/Abu Dhabi
- 5) Egypt
- 6) Jordan
- 7) Kazakhstan
- 8) Kenya
- 9) Kuwait
- 10) Malabo
- 11) Mauritius
- 12) Oman
- 13) Qatar
- 14) Saudi Arabia

## **B. South Asia:**

- 1) Bangladesh
- 2) India
- 3) Pakistan
- 4) Sri Lanka

## **C. South-East Asia:**

- 1) Brunei
- 2) Cambodia
- 3) Indonesia
- 4) Laos
- 5) Myanmar
- 6) Papua New Guinea
- 7) Philippines
- 8) Singapore
- 9) Thailand
- 10) Vietnam



# SOME LANDMARK PROJECTS OF PRINCIPAL



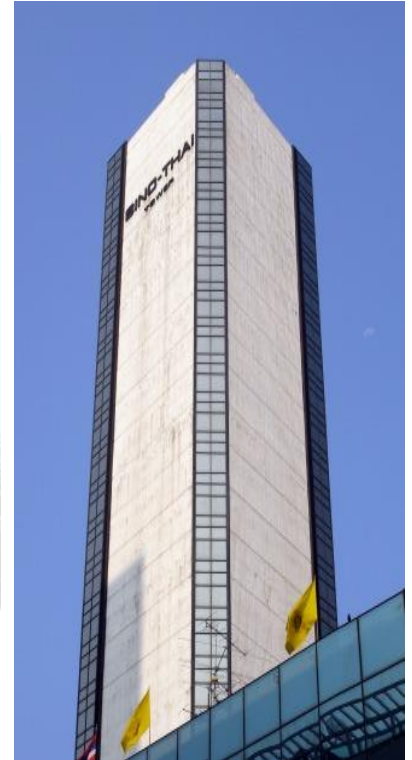
# Landmark Projects in Thailand



Bank of Ayudhya New H/Q  
Toshiba



Sermit Tower  
Toshiba



Sino Thai Tower  
MS

# Landmark Projects in Indonesia



JW Marriott Hotel,  
Jakarta - toshiba



Pacific Place, Jakarta  
(the Pacific Place Mall, The One  
Pacific Place Office Center, and  
Ritz Carlton Hotel)  
Hotel : Toshiba  
Mall : MS



Manhattan Hotel  
Toshiba



Sahid Sudirman  
Toshiba

## Landmark Projects in Indonesia



Bank Indonesia, Jakarta



Botanica  
Residence



Gandaria City



Kota  
Kasablanka

## Landmark Projects in Malaysia



1st Avenue,  
Penang



Bayswater Resort  
Condominium, Penang



Menara UMNO,  
Penang



Sunway Carnival Mall, Penang

# Landmark Projects in Malaysia



Boulevard Hotel, KL-  
Toshiba



Citel Mid Valley, KL- Mixed



Bukit Aman Police HQ, KL- MS



Hilton, KL- Toshiba



# Landmark Projects in Malaysia



The Binjai, KL



The Troika, KL



Cendana Condominium, KL



The Oval, KL



PJ8



The Avare, KL

## Landmark Projects in Malaysia



St Regis Hotel  
- Toshiba



Quadro KLCC-  
Toshiba



Cosy Bonanza



KL Sentral – MRCB Lot G



VIPOD KLCC



MIDA Sentral & Menara SSM  
@ KL Sentral- MS



Mid Valley City - Mixed

## Landmark Projects in Mauritius



B & S Court



Colombiere Project



Bliss Project

## Landmark Projects in CIS



Masjid, Azerbaijan



Dom Soviet, Azerbaijan



Shikov Hotel, Azerbaijan

S

## Landmark Projects in Middle East



Limit Project, Jordan



Goshi Building, Jordan

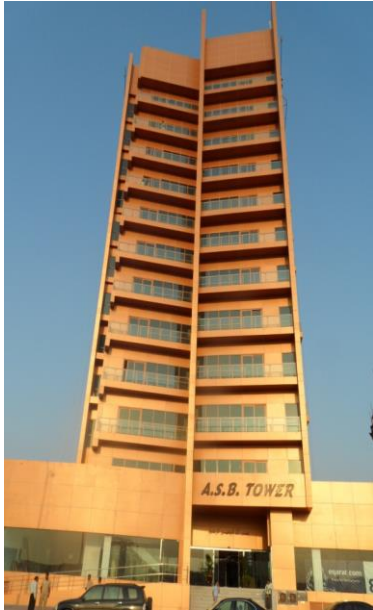
# Landmark Projects in Middle East



Dubai Coral Deira Hotel,  
UAE



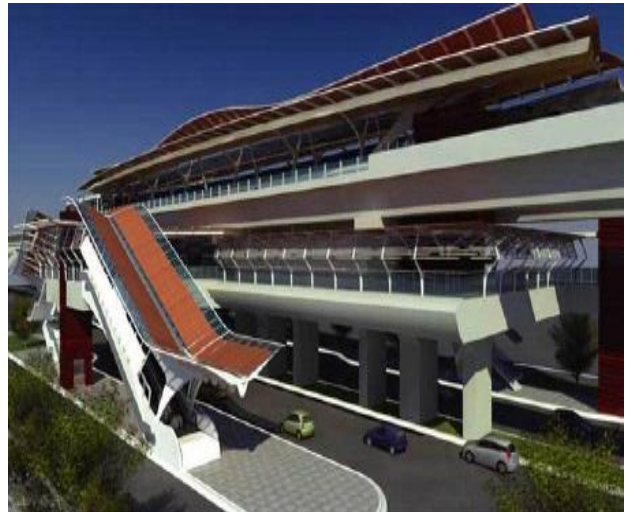
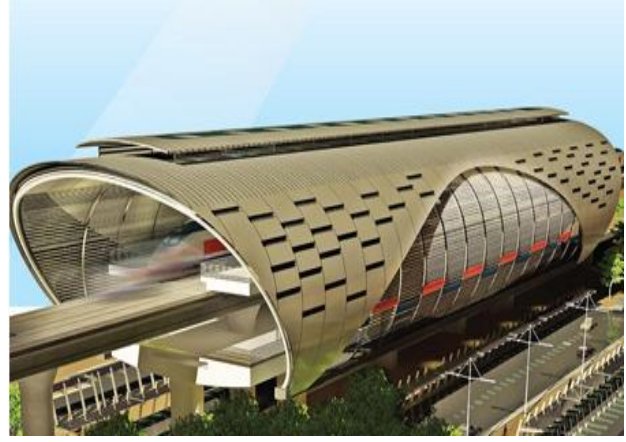
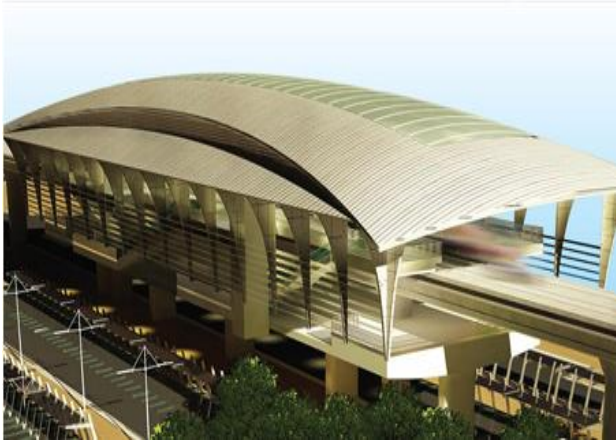
Marina Crown Tower,  
UAE



Al Balushi Silicon Oasis,  
UAE

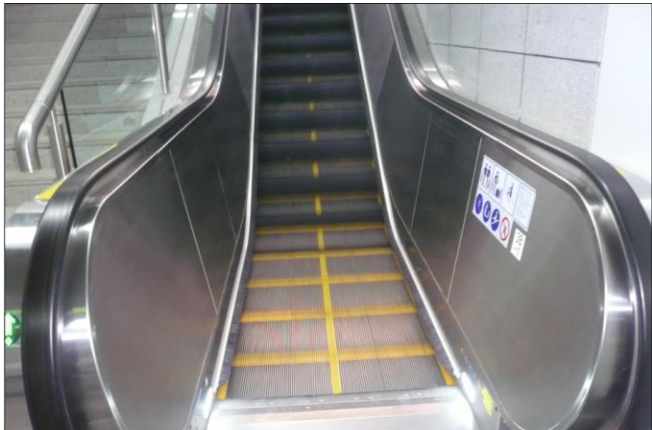
# Station Model Photos

## Kelana Jaya and Ampang - LRT Extension Line



	No. of Station	No. of Elevator	No. of Escalator	Total
Kelana Jaya Line	13	16	34	50
Ampang Line	13	27	53	80
<b>Total</b>				<b>130</b>

# Kelana Jaya and Ampang LRT Escalator Photos





## MRT – Sungai Buloh - Kajang



No. of Station	No. of Escalators
31	191

## Landmark Projects in Middle East



Al Noor International  
Complex,  
Kuwait



Al Kazem Group  
Office,  
Qatar



Sharifa Al Talib  
Building, Qatar



Government  
projects, Qatar

## Landmark Projects in India



Lumbini Square



Ouranya Bay



Agnitio Park